



Newsletter

Term: AUTUMN 2014

Issue No: 09

Date: 14th November

Dear Parents, Carers and Children

Together with many, many thousands of people throughout the world, we were pleased to mark Remembrance Day on Tuesday 11th November with a 2-minute silence in school at 11am. Staff joined children in their classrooms, and even our youngest children in Caterpillars and Ladybirds had an understanding of the importance of the occasion.

Thank you to everyone who donated to the poppy appeals held at all our sites. We are usually notified by our local Royal British Legion representatives of the amount raised, and will let you know when we hear.

Thank you also to everyone who brought a wrapped Christmas shoebox to school for the Operation Christmas Child appeal, or a gift to be included in a class shoebox. It must be so difficult for our children at North Downs to imagine what it would be like for Christmas Day to be no different to any other, with no hope of a gift to open, so theirs and your time and generosity will be much appreciated.

Christmas generally has stepped up a pace from the start of November, with costumes reappearing from store rooms, and planned Christmas events imminent. Don't forget, for example, to join FONDS on Saturday 29th November to make your Christmas Wreath.

Finally, we draw your attention to **Parental E-safety sessions** being run on 25th & 27th November - please see the **Reminders/Dates** section for further details.



Before half term, **Beetles and Butterflies** had a trip to the Tesco Store at Gatwick, where they reinforced their knowledge of healthy eating by making fruit kebabs; as well as tasting cheese, finding out about different fish and making pizza - which they all enjoyed eating the following day!

This visit was in conjunction with the Eat Happy project who have a great website that you may enjoy looking at with your children <http://www.eathappyproject.com/>.

A special thank you to those parents who volunteered to join us on the trip - without parental support trips would not be able to take place.

Miss Winslade, Mrs Baldwin and Ms Mason



The children in **Art Club** have been enjoying their craft activities this term and are proving to be very creative. Here are some monsters that Frankie, Lily, Mia and Tiago made from paper plates.



A taste of Italy came to Betchworth.... **Caterpillars** thoroughly enjoyed making and of course eating their own pizzas.

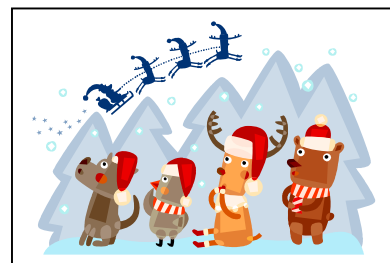
They had a range of healthy toppings to choose from and head chef Mrs Prout was very impressed with their culinary skills!

Other News

Christmas Market: St Mary's Church, Reigate on **Saturday 22nd November** 2pm-6.30pm. German-style Christmas market in the church itself; lots of stalls and a festive crafts area for children of all ages. Also a Christmas Café with wood fired pizza, crepes, hot chocolate, mulled wine and mince pies. Come and enjoy the start of the festive season.

Christmas Fair: to be held on **Saturday 29th November** in Betchworth Village Memorial Hall. Handmade crafts and gifts, festive cake stall, mulled wine and raffle. Support local craftsmen and help raise funds for St Michael's Church Lady Chapel Fund.

Christingle Service: you may be interested in a Christingle Service at St Michael's, Betchworth on Sunday 30th November. In addition to the Christingle collection for the Children's Society, there will also be the opportunity for you to donate a toy to Welcare in time for Christmas. Welcare will be distributing these to families in the local area, who are going through difficult times,



Friends' Matters

FONDS are looking forward to the **Frock Swop** tonight!

Reminder Dates: for **Wreath Making** on the **29th November** and **Christmas Fair** on **Friday 5th December**. Thank you for all the help and support we've had so far.

If you wish to contact FONDS directly, please use the following email address - fonds@northdowns.surrev.sch.uk

Reminders / Dates

Always remember to check the updated Diary Dates on the following page

(Note: dates in italics have been added or changed this week)

Parent E-Safety sessions: further to our newsletter article on the subject of e-safety in early October, we are now pleased to invite you to one of two parental e-safety sessions we are holding on **Tues 25th Nov 9.15-10am** or **Thurs 27th Nov 7-7.45pm**. These sessions are to be held in the Computer Suite at Brockham. All are welcome.

School Meals: please be reminded that costs for KS2 this half term are: **Years 3 & 4 & 5 = £73.50 / Year 6 = £71.40** (incl. deduction for November school trip). We have payments overdue and ask you to address this immediately. Please be aware that it is a Surrey Commercial Services regulation that schools meals cannot continue to be provided where there is an outstanding debt. Please check your Tucasi account or speak to your school office if you are unsure if your account is in arrears. Thank you.

Data Collection Sheets: please look in bookbags today for your child's Data Sheet, if their surname begins with R or S. These are due back, signed and dated, by **Friday 21st November** at the latest please - with corrections if necessary.

Swimsense update: school swimming has ended for winter, but the following activities continue:

Toddlers - Mondays 2.15pm, 4 sessions to term end, for 3+ with Mum in the water, £7.50 a session

Babies - Fridays 9.30am, vaccinated babies above 4 months with Mum in the water, £7.50 a session

After School Club - Thursdays 3.20pm, 4 sessions to term end, now open for new and existing children (school age beginners only), £7.50 per session.

Crash Courses - Christmas dates mean we are unable to hold a course this holiday, but look out for Feb half term.

For queries or bookings please contact Emma at emma@emmamiller.demon.co.uk

Yours sincerely

A.J. Ewing

Finally

Enjoy the weekend



Autumn Term 2014

Tuesday 18 th Nov	Individual School Photos - Betchworth & Leigh
Friday 21 st Nov	Year 6 LT Museum & Globe Theatre trip
Friday Nov 21 st	Butterflies (Yr2) Assembly 9.15am
Tuesday 25 th Nov	Parent E-Safety session 9.15-10am Computer Suite, Brockham
Thursday 27 th Nov	Parent E-Safety session 7-7.45pm Computer Suite, Brockham
Friday Nov 28 th	5S Assembly 9.15am
Saturday 29 th Nov	FONDS Wreath Making (see FONDS letters for details)
w/c Dec 1 st	Last week of NDPS clubs
Monday 1 st Dec	Christingle Assembly for children at Brockham
Tuesday 2 nd Dec	Christingle Assembly for children at Betchworth
Wednesday 3 rd Dec	Christingle Assembly for children at Leigh
Friday Dec 5 th	6C Assembly 9.15am
Friday 5 th Dec	FONDS Christmas Fair 3.30pm Brockham Village site
Wednesday 10 th Dec	KS2 Christmas Concert 1.30pm Brockham
Thursday 11 th Dec	KS2 Christmas Concert 6pm Brockham
Friday 12 th Dec	Whole School Christmas Lunch - (pupils and staff)
Monday 15 th Dec	Betchworth Year R Nativity & Gold Star Assembly 9.15am
Monday 15 th Dec	Betchworth Year R Nativity 2.15pm
Tuesday 16 th Dec	Leigh KS1 (Years 1 & 2) Nativity & Gold Star Assembly 9.15am
Tuesday 16 th Dec	Brockham KS1(Years 1 & 2) Nativity & Gold Star Assembly 2pm
Wednesday 17 th Dec	Brockham KS1(Years 1 & 2) Nativity 9.15am
Wednesday 17 th Dec	Leigh KS1 (Years 1 & 2) Nativity 2pm
Wednesday 17 th Dec	Carol Service, Christ Church Brockham 7pm
Thursday 18 th Dec	Brockham Year R Nativity 9.15am
Thursday 18 th Dec	Brockham Year R Nativity 2.15pm
Thursday 18 th Dec	Christmas Discos - all at Brockham site: 3.15pm - 4pm Year R & 1 & 2 4.15pm - 5pm Year 3 & 4 5.15pm - 6.15pm Year 5 & 6 Tickets £2 to include a drink
Friday Dec 19 th	Brockham Gold Star Assembly 9.15am
Friday Dec 19 th	Last Day of Term - school finishes at usual time (no early closure)

We will be adding Spring Term dates shortly...

Term and Holiday Dates 2014/2015

....are available on the school website www.northdowns.surrey.sch.uk

and on the Surrey County Council website www.surreycc.gov.uk

INSET DAYS: 1st) 02/09/2014 2nd) 03/09/2014 3rd) 05/01/2015 4th) 20/07/2015 5th) 21/07/2015

Term and Holiday Dates 2015/2016

....are available on the school website www.northdowns.surrey.sch.uk

and on the Surrey County Council website www.surreycc.gov.uk