



Newsletter

Term: AUTUMN 2014

Issue No: 12

Date: 5th December

Dear Parents, Carers and Children

We are looking forward greatly to the next two week's various Christmas performances, which promise to be very enjoyable events if this week's rehearsals are anything to go by!

Next week is also our whole school Christmas Lunch, with staff joining pupils on Friday for a turkey (or vegetarian) dinner and crackers.

You are reminded that unless your child regularly has a school meal, it was necessary to pre-book a Christmas Lunch for Friday 12th (with payment required for Years 3 to 6). If you have not pre-booked a lunch for that day, please ensure your child has their usual packed lunch.

Don't forget that this was the last week of the term for NDPS after-school clubs, so please adjust any relevant pick-ups.

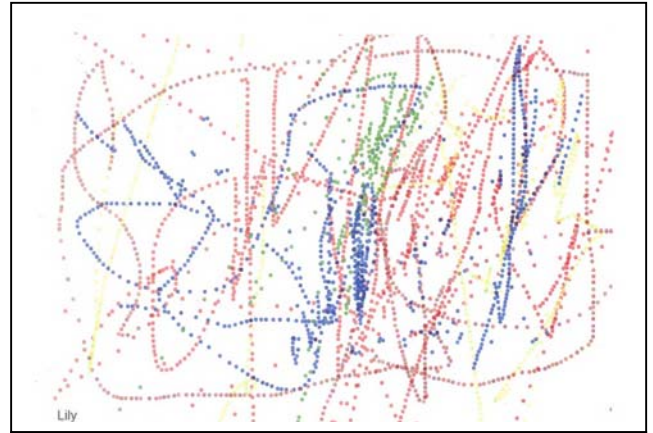
Reception Learning Journey drop-in sessions

Parents are reminded about next week's class drop-in sessions, giving you the opportunity to share your child's Learning Journey this term. See our Diary Dates page for days and times - no booking necessary.

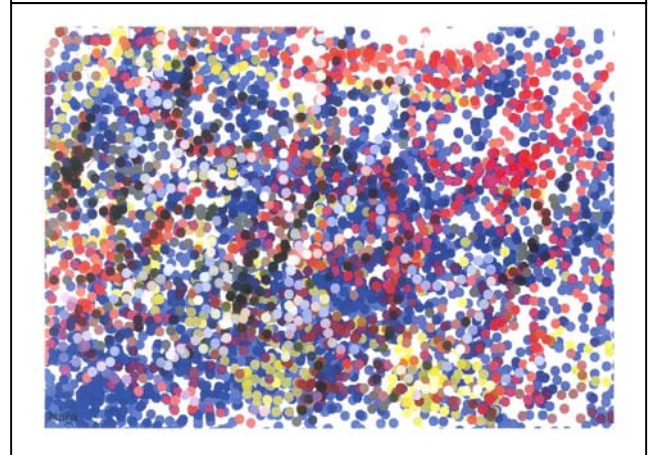
Flora Tubs4Tablets Campaign

Do you use Flora spread or Stork margarine? Flora has teamed up with Tesco to give primary schools the chance to collect tokens in exchange for touch screen tablets. 50 tokens = 1 touch screen tablet. If you are able to help, do bring your tokens from promotional packs of Flora and Stork into school please. Thank you.

Finally, an advance reminder that school finishes at normal time on Friday 19th December (no early closure); and resumes on Tuesday 6th January 2015, as Monday 5th January is the third of our five Inset Closures for this academic year 2014-2015.



Reception looked at Pointillism in Art this week, and created their own artworks using a computer programme in class - with very colourful results as can be seen from Lily's and Nara's pictures.



This week, your child has come home with a Christingle candle collection box, following their assembly with Revd Kate (see photos, right).

The Children's Society are grateful for any and all donations they receive, which are used to 'bring a little light' into the lives of children living through difficult times, so thank you in advance for your generosity.

You are asked to return your box to school after Christmas please, during the first week of the new term.



Our Dragonflies have been learning about Judaism as part of their R.E. studies this term...

...and have enjoyed making their own Torah each.



Other News

Reigate Grammar School Hockey Training Camps: will be running over the Christmas holiday for ages 9-14, with Giles Dakin, a member of the England Hockey Coaching Team. If you are interested, please contact Giles Dakin at GDGK@LIVE.com

Friends' Matters

After weeks and weeks of preparation the Christmas Fair is finally here! We would like to thank everyone who has donated gifts and time towards this event. We hope you and your children enjoy it. The Grand Raffle will be drawn at 4:30pm so you still have time to buy more raffle tickets!!!

See you all there, FONDS x

If you wish to contact FONDS directly, please use the following email address -
fonds@northdowns.surrey.sch.uk

Reminders / Dates

Always remember to check the updated Diary Dates on the following page

(Note: dates in italics have been added or changed this week)

Buttons: we are collecting purple school buttons! If you ever have a school cardigan that has seen too much wear to be of use to anyone else, please remove the buttons for our collection please before throwing it away. Then, if anyone loses a button and has no spare, we may be able to help in the office!

Courtesy and neighbourliness: once again, we write to ask you to park not only safely, but with consideration for our school neighbours and other road users - especially ensuring you are not blocking driveways, even partially please. Parents at Betchworth are reminded that they are invited to park in the church car park; please do not park in The Walled Garden.

In response to requests from Brockham villagers, we ask that if your child cycles or 'scooters' to school using the public pavement, you remind them that priority must be given to pedestrians, and that they should stop and move to one side to allow pedestrians a safe passage.

Thank you for your assistance in these matters.

Yours sincerely

A.J. Ewing

Finally

Have fun at the Fair - and a great weekend!

Autumn Term 2014

Monday 8 th Dec	Reception Learning Journey class drop-in session 2.30-3pm
Wednesday 10 th Dec	Reception Learning Journey class drop-in session 8.45-9.15am
Wednesday 10 th Dec	KS2 Christmas Concert 1.30pm Brockham
Thursday 11 th Dec	KS2 Christmas Concert 6pm Brockham
Friday 12 th Dec	Whole School Christmas Lunch - (pupils and staff)
Monday 15 th Dec	Betchworth Year R Nativity & Gold Star Assembly 9.15am
Monday 15 th Dec	Betchworth Year R Nativity 2.15pm
Tuesday 16 th Dec	Leigh KS1 (Years 1 & 2) Nativity & Gold Star Assembly 9.15am
Tuesday 16 th Dec	Brockham KS1 (Years 1 & 2) Nativity 2pm
Wednesday 17 th Dec	Brockham KS1 (Years 1 & 2) Nativity 9.15am
Wednesday 17 th Dec	Leigh KS1 (Years 1 & 2) Nativity 2pm
Wednesday 17 th Dec	Carol Service, Christ Church Brockham 7pm
Thursday 18 th Dec	Brockham Year R Nativity 9.15am
Thursday 18 th Dec	Brockham Year R Nativity 2.15pm
Thursday 18 th Dec	Christmas Discos - all at Brockham site: 3.15pm - 4pm Year R & 1 & 2 / 4.15pm - 5pm Year 3 & 4 5.15pm - 6.15pm Year 5 & 6 Tickets £2 to include a drink
Friday Dec 19 th	Brockham Gold Star Assembly 9.15am
Friday Dec 19 th	Last Day of Term - school finishes at usual time (no early closure)

Spring Term 2015

Monday Jan 5 th	INSET 3 of 5 - School closed to children
Tuesday 6 th Jan	Pupils return to school
Monday Jan 19 th	NDPS clubs begin
Tuesday Jan 20 th	Yr5/6 Ashcombe - Athletics - Sports Hall 2-4pm
Friday Jan 23 rd	Dragonflies Assembly
Friday Jan 30 th	5MS Assembly
Friday Feb 6 th	3M Assembly
Friday Feb 6 th	MUFTI for British Heart Foundation (wear something RED)
Friday Feb 6 th	Yr3/4 Key Steps Gym competition 9.30 - 12
Friday Feb 13 th	4HW Assembly
Friday Feb 13 th	Valentine's Disco: KS1 3.15 - 4pm / Years 3&4 4.15 - 5pm / Years 4&5 5.15 - 6.15pm
Monday Feb 23 rd	Swimming starts
Friday Feb 27 th	4MS Assembly
Thursday March 5 th	KS1 Bedtime Story 6pm to 7pm at all three sites
w/c Monday 2 nd March	Book Week
Friday March 6 th	3MB Assembly
Friday March 6 th	End of Book Week - dressing up as book character
Friday March 13 th	5S Assembly
Week of March 16 th	Last week of NDPS clubs
Friday March 20 th	6J Assembly
Friday March 20 th	FONDS Quiz Night 7.30pm
Friday March 20 th	Year 6 Pupil Reports go home
Tuesday March 24 th	Parent Consultations (pupils present) Brockham: 5 - 7.30pm Leigh and Betchworth: 3.30 - 6pm
Thurs March 26 th	Parent Consultations (pupils present) Brockham: 3.30 - 6pm Leigh and Betchworth: 5 - 7.30pm
Tuesday March 24 th	Gold Star Assembly - Betchworth 9.15am - by invitation
Thursday March 26 th	Gold Star Assembly - Leigh 9.15am - by invitation
Friday March 27 th	Gold Star Assembly - Brockham 9.15am - by invitation
Friday 27 th March	Last Day of Term - school finishes at usual time (no early closure)

Term and Holiday Dates 2014/2015

....are available on the school website www.northdowns.surrey.sch.uk
and on the Surrey County Council website www.surreycc.gov.uk

INSET DAYS: 1st) 02/09/2014 2nd) 03/09/2014 3rd) 05/01/2015 4th) 20/07/2015 5th) 21/07/2015

Term and Holiday Dates 2015/2016

....are available on the school website www.northdowns.surrey.sch.uk
and on the Surrey County Council website www.surreycc.gov.uk