

Twelve 15

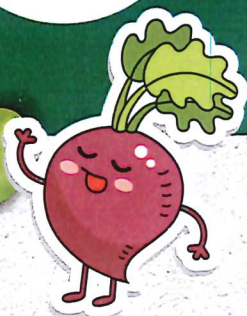
Week 1

Autumn/Winter 2025/26 Menu



Weeks Starting:

3rd November, 24th November, 15th December,
19th January, 9th February and 9th March



Monday

Option 1

Cheese and
Tomato Pizza
with Potato Tots



Option 2

Vegetarian

Chinese Veggie
Noodles



Option 3

School's
Choice

Dessert: Gingerbread Biscuit



Tuesday

Tex-Mex
Beef and Beans
with Rice

Veggie Sausage
Roll with Potato
Tots

School's
Choice

Dessert: Orange and Peach Jelly



Wednesday

Roast Chicken
with Roast
Potatoes
and Gravy

Megan Sausage
Cutlet with
Roast Potatoes
and Gravy

School's
Choice

Dessert: Cheese and Biscuits with sliced Apple



Thursday

Chicken and
Vegetable Pie
with Creamed
Potatoes

Cheesy Tomato
Pasta with
Garlic Bread

School's
Choice

Dessert: Chocolate Sponge and Chocolate Sauce



Friday

Fish Fingers
with Oven
Chips

Veggie
Dippers with
Oven Chips

School's
Choice

Dessert: Strawberry Mousse



Sides:

Daily Seasonal Vegetables, Salad Bar and Fresh Bread.



Vegetarian



Hidden veggies



Contains a minimum of 50% fruit



Twelve 15

Week 2

Autumn/Winter 2025/26 Menu



Weeks Starting:

10th November, 1st December, 5th January,
26th January, 23rd February and 16th March



Monday

Option 1

Creamy Pesto
Pasta Bake



Option 2

Vegetarian

Forest Green
Vegan Patty with
Potato Tots



Option 3

School's
Choice

Dessert: Lemon Shortbread



Tuesday

Superfood
Beef Grill with
Potato Tots



Thai Style Mild
Coconut and
Lime Vegetables
with Rice



School's
Choice

Dessert: Sliced Bananas with Vanilla Custard



Wednesday

Roast Pork
with Roast
Potatoes and
Gravy

Cheesy Lentil
and Sweet Potato
Parcel with
Roast Potatoes
and Gravy



School's
Choice

Dessert: Strawberry Jelly



Thursday

Mild Coconut
and Lime Chicken
with Rice

Cheesy Courgette
and Tomato Twist
with half a Jacket
Potato



School's
Choice

Dessert: Sticky Orange Cake



Friday

Harry Ramsden's
Fish with
Oven Chips

Vegetable Fajitas
with Oven Chips



School's
Choice

Dessert: Peaches and Yoghurt



Sides:

Daily Seasonal Vegetables, Salad Bar and Fresh Bread.



Vegetarian



Hidden veggies



Contains a minimum of 50% fruit



Twelve 15

Week 3

Autumn/Winter 2025/26 Menu



Weeks Starting:

17th November, 8th December, 12th January,
2nd February, 2nd March and 23rd March



Monday

Option 1

Veggie Pizza
with Potato Tots



Option 2

Vegetarian

Tex-Mex
Veg with Rice



Option 3

School's
Choice

Dessert: Fruity Oat Cookie

Tuesday

Pork Sausages
(contain beef)
with Creamed
Potato and Gravy

Veggie Sausages
with Creamed
Potato and
Gravy



School's
Choice

Dessert: Chocolate and Banana Shortbread Crunch

Wednesday

Roast Chicken
with Roast
Potatoes and
Gravy

Plant Hero Vegan
Roast with Roast
Potatoes and
Gravy

School's
Choice

Dessert: Fresh Dairy Yoghurt

Thursday

Sweet and
Sour Chicken
with Rice

Sweet Potato
Whirl with Rice



School's
Choice

Dessert: Apple Crumble with Custard

Friday

Fish Fingers
with Oven Chips

Vegetable Fingers
with Oven Chips

School's
Choice

Dessert: Butternut Muffin



Sides:

Daily Seasonal Vegetables, Salad Bar and Fresh Bread.



Vegetarian



Hidden veggies



Contains a minimum of 50% fruit

