



u_e saying /yoo/

A Visit to Albert Einstein



twinkl

Today, we are learning to read words that contain
u_e saying /yoo/.



u and **e** are cheeky partners. When **u** and **e** work together, they say /yoo/.

u and **e** are too cheeky to sit together so they have to have a letter sit between them.



Let's read these words.

use

You can teach children to say the split digraph first 'u_e' before the letter in between i.e. /yoo/ /s/. It may help some children to explain that the 'e' is telling the 'u' to say its name and that they shouldn't make the /e/ sound.

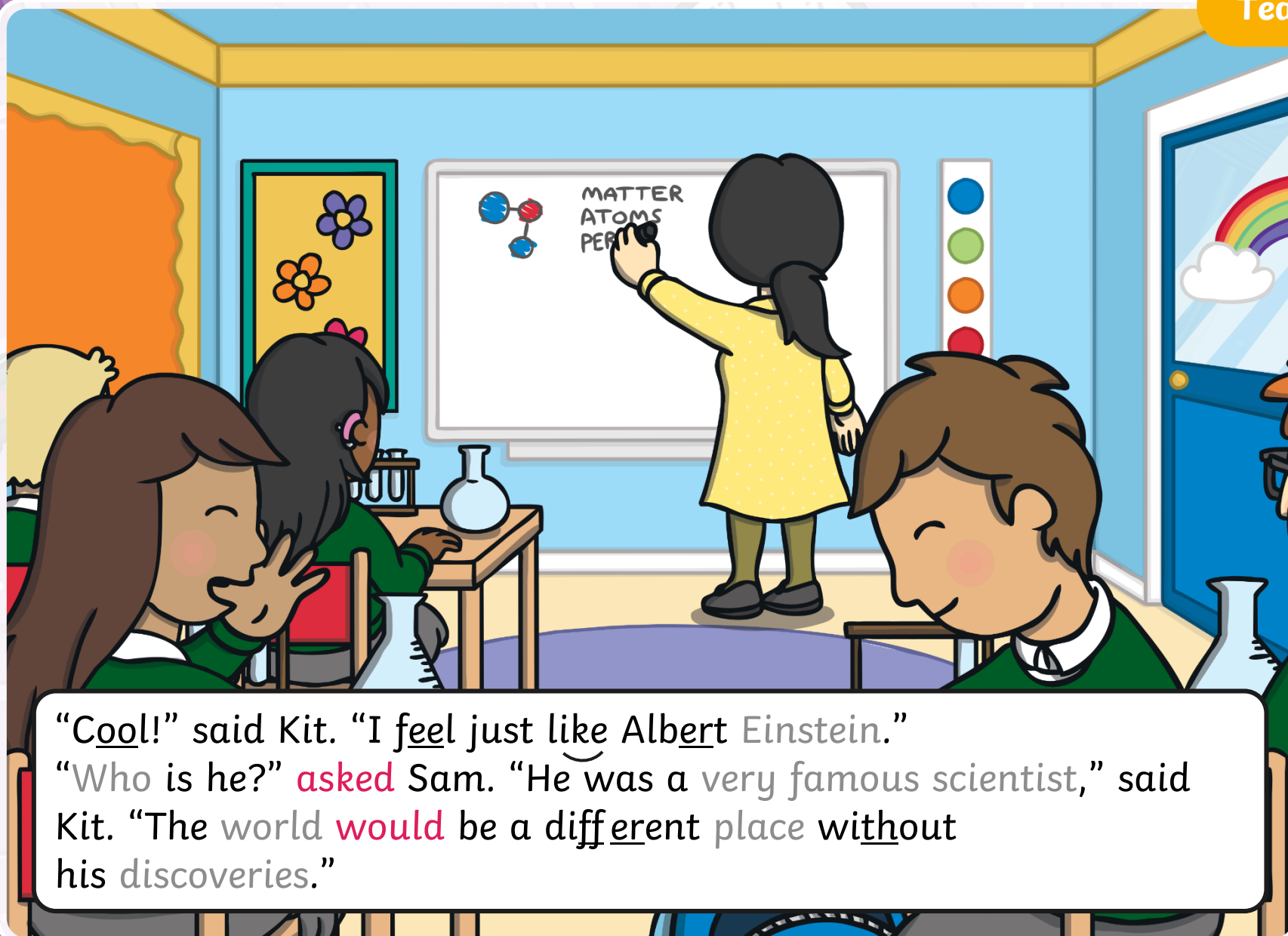
X



Click me for Kit's teaching tips!



Kit and Sam were in a school science lesson. “Today, we will use a test tube to do an experiment,” said **their** teacher, **Mrs** Tan. “Then, you will all complete a science project for **your** homework. Take a test tube home as you will need to use one for your project.”



“Cool!” said Kit. “I feel just like Albert Einstein.”

“Who is he?” **asked** Sam. “He was a very famous scientist,” said Kit. “The world **would** be a different place without his discoveries.”



Sam wanted to find out more about Albert Einstein. "I have an idea," said Kit and he took out the magic watch. "Let's go and meet him...he **could** even help with our science projects!" The room began to fade...

Kit and Sam are speeding back through time to visit Albert Einstein. Can you match all the words to the images before the clock hands stop spinning backwards?

Overall, the 'u_e' spelling of this sound is most common.

X



Click me for Kit's teaching tips!

Teach

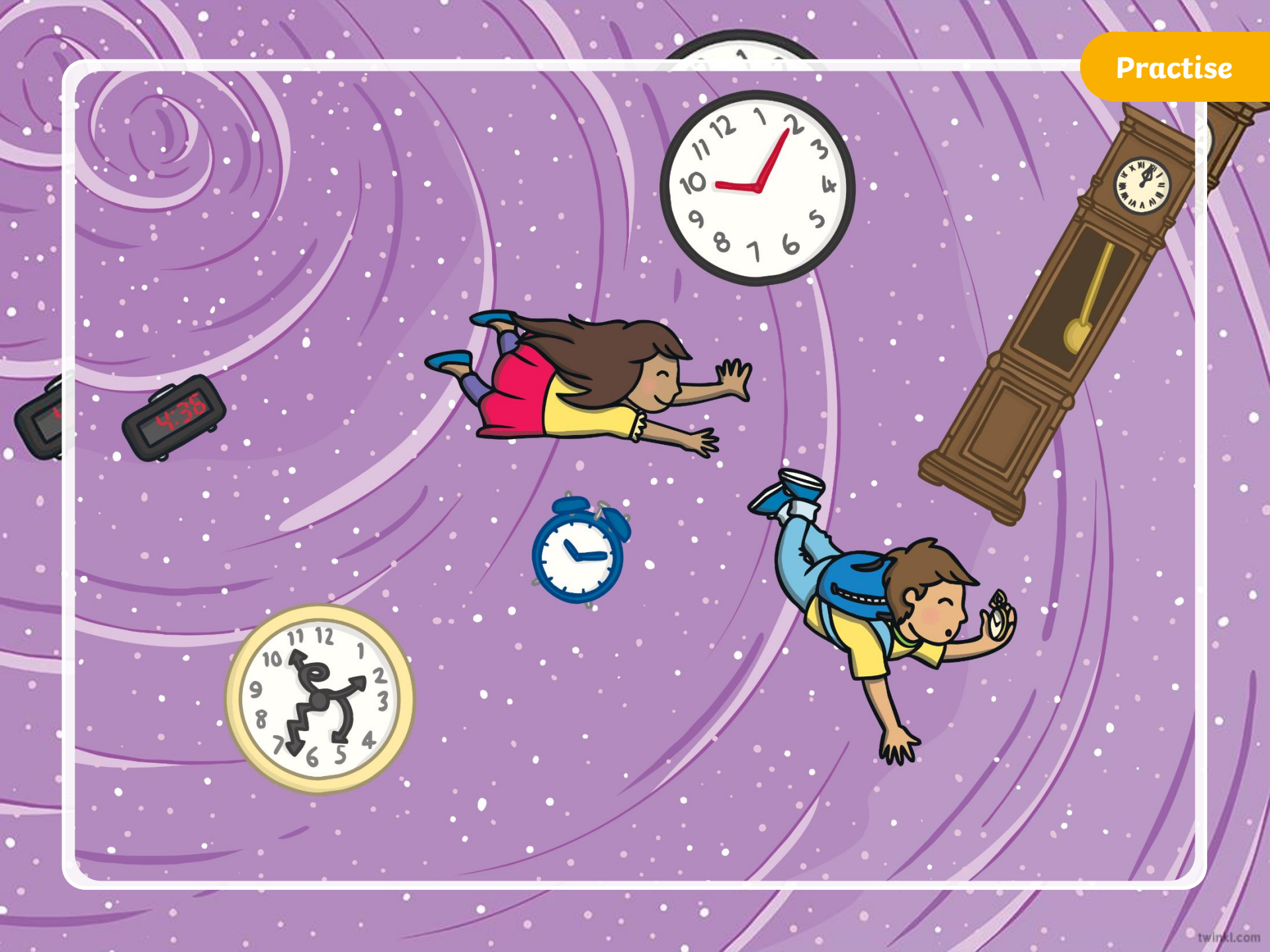
Play



Fairytale Words

As Kit and Sam hurtle back through space and time, objects fly past them with some words on! Can you read the words before they disappear?





Kit and Sam found themselves outside a huge white house. "Where are we?" **asked** Sam.

"This is Albert Einstein's home in America. We must be in about the year 1935. That is when he moved to this house."

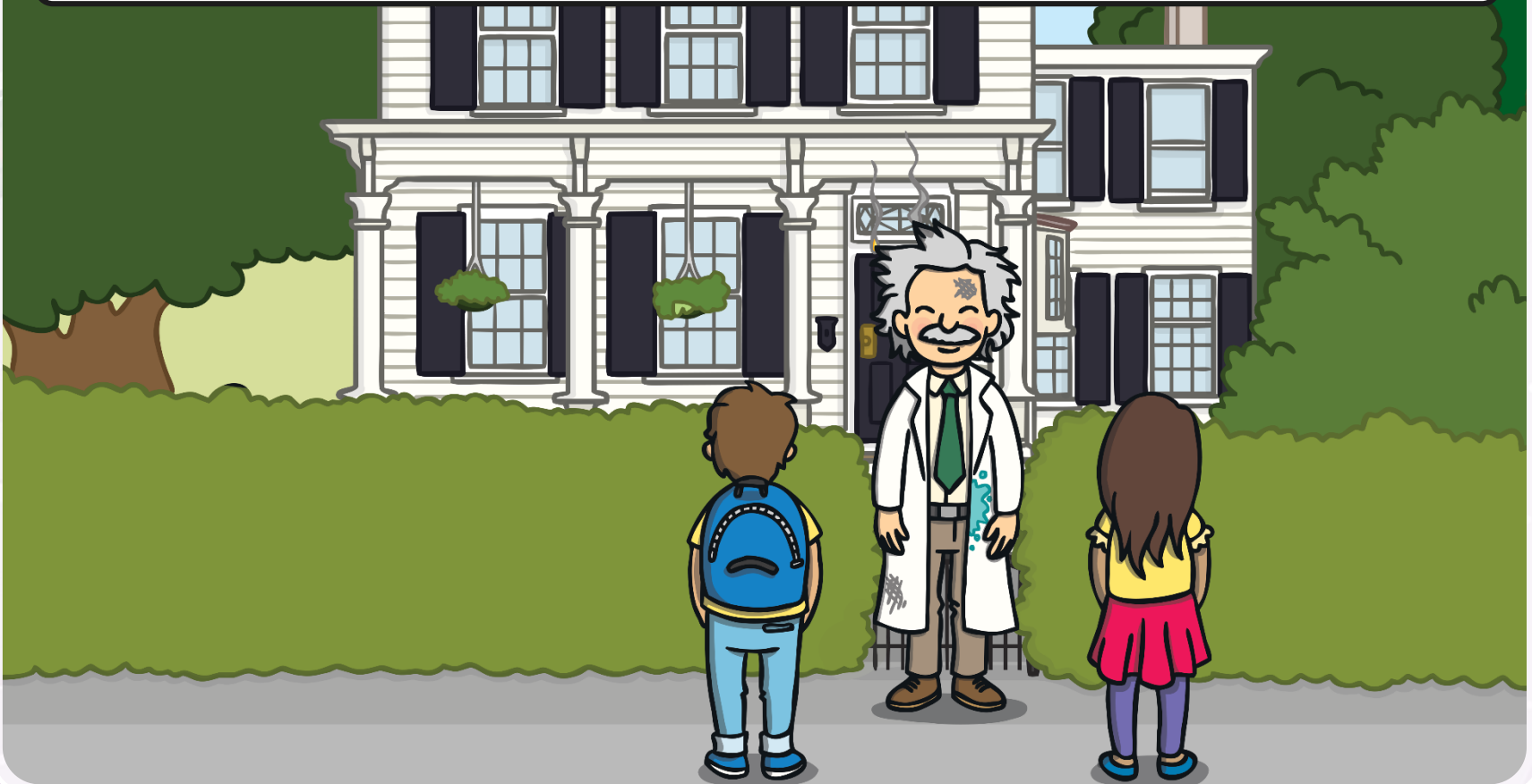




Sam **looked** around as Kit put away the magic watch. “Do you think we **should** have **called** and **asked** whether we **could** visit first?” **asked** Sam nervously.

Sentence Time

Suddenly, a grumpy-looking man appears from the house and looks up and down the road. What does he say?



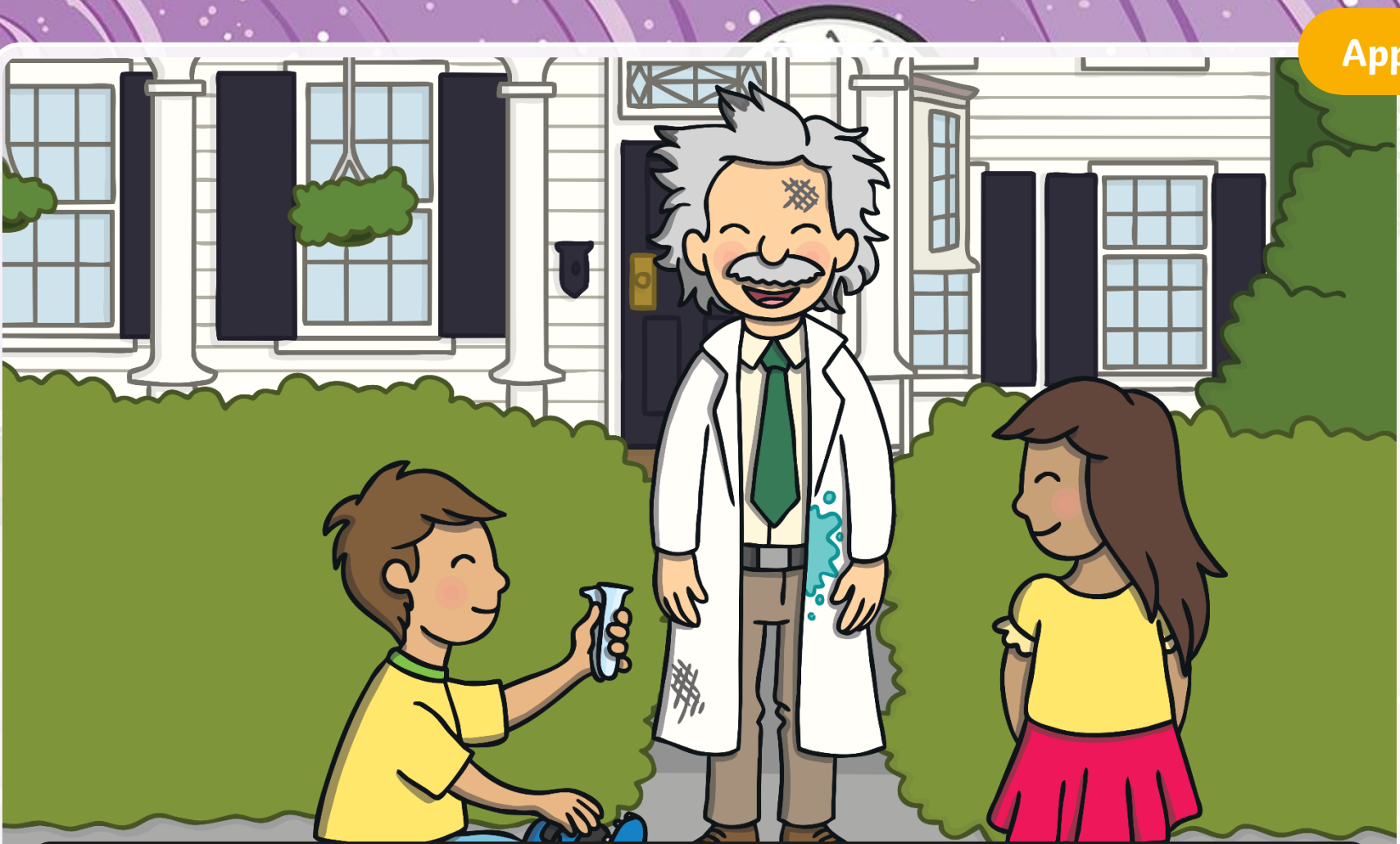


“I **asked** for a test tube but the mailman has not **called** yet!”

Sound Buttons On/Off

Show

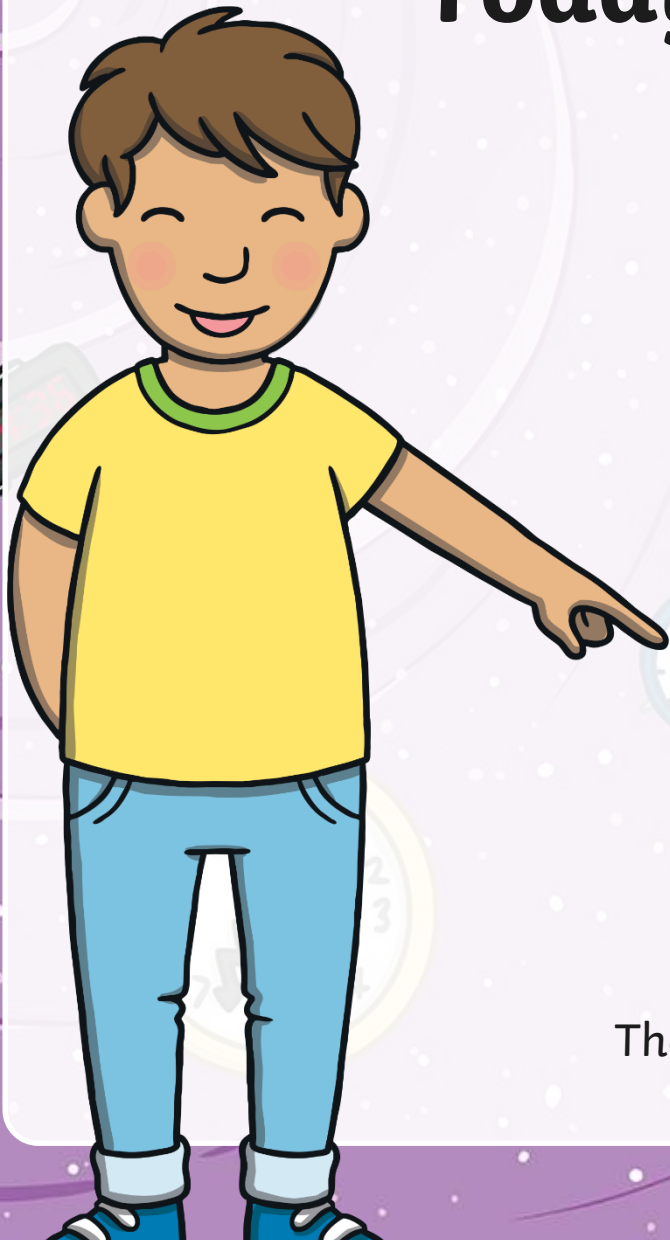




The man saw Kit and Sam standing outside his house. “Are you the mailman with the test tube I need to use?” he asked Kit. “No,” replied Kit. “But I might be able to help you...”

Today, we have learnt...

u_e
saying /yoo/



The adventure continues next lesson!



twinkl

