

Stonehenge Quiz



When was it first started?



3000 years ago

4000 years ago

5000 years ago

Next

How many people were buried there?



100

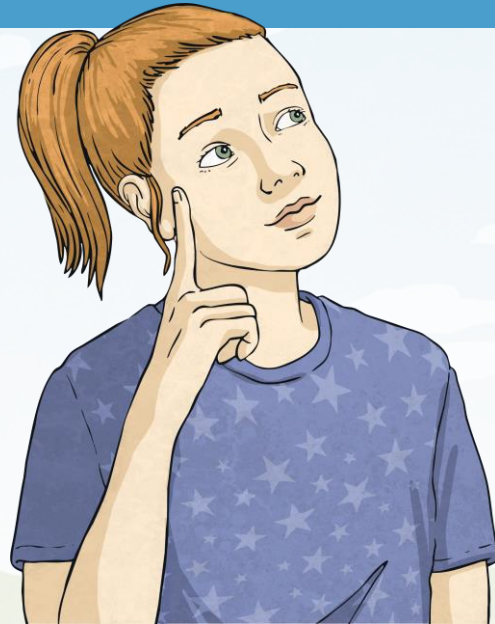
150

50

Back

Next

How did they dig the ditch?



Picks made from
antlers

Tools made from
oxen bones

Flint tools

Back

Next

What are the pits known as?



Aubrey Holes

Adam Holes

Audrey Holes

Back

Next

What was the Avenue?



A line of stones from the entrance.

An earth corridor leading to the slaughter stone.

An earth corridor leading to the river Avon.

Back

Next

What was the name of the enormous stones that were added later?



Saracen Stones

Sarsen Stones

Samson Stones

Back

Next

Where did the bluestones come from?



Pwllheli, Wales

Prestatyn, Wales

Preseli Hills, Wales

Back

Next

Which stone can be found in the middle of the circle?



The Slaughter Stone

The Heel Stone

The Altar Stone

Back

Next

What was in the Slaughter Stone that gives it a reddish colour when it rains?



iron

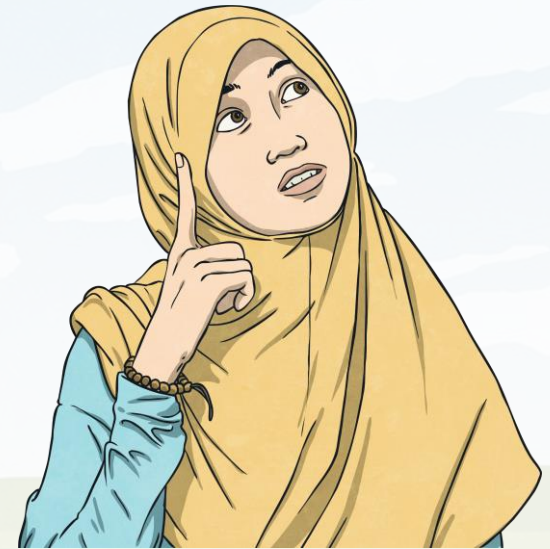
copper

blood

Back

Next

What can be seen carved into some of the Sarsen stones?



animals

symbols

Axe heads

Back



twinkl