



Maths Mastery

Mental Calculations

twinkl

Perform these mental calculations, explaining your method:

$$2500 \times 15 =$$

$$16 \times 502 =$$

$$27\,200 + 34\,024 =$$

$$5906 - 2801 =$$

$$56\,000 \div 700 =$$

$$289\,000 + 3561 =$$



Perform these mental calculations, explaining your method:

$$30 \times 5 + 267 =$$

$$(138 + 99) \times 3 =$$

$$4500 \div 9 - 143 =$$

$$780 \times 3 - 1340 =$$

$$(1340 + 1160) \div 50 =$$

$$1400 \div (37 + 33) =$$



$$267 \times 76 = 20\,292$$

Use this fact to calculate:

$$26.7 \times 7.6 =$$

$$2.67 \times 760 =$$

$$267 \times 0.76 =$$

$$26.7 \times 76\,000 =$$

$$20\,292 \div 7.6 =$$

$$202.92 \div 26.7 =$$

$$10\,146 \div 76 =$$



Calculate the mean of these numbers
in your head:

23

29

39

13

16

24

Which calculation is the odd one out.

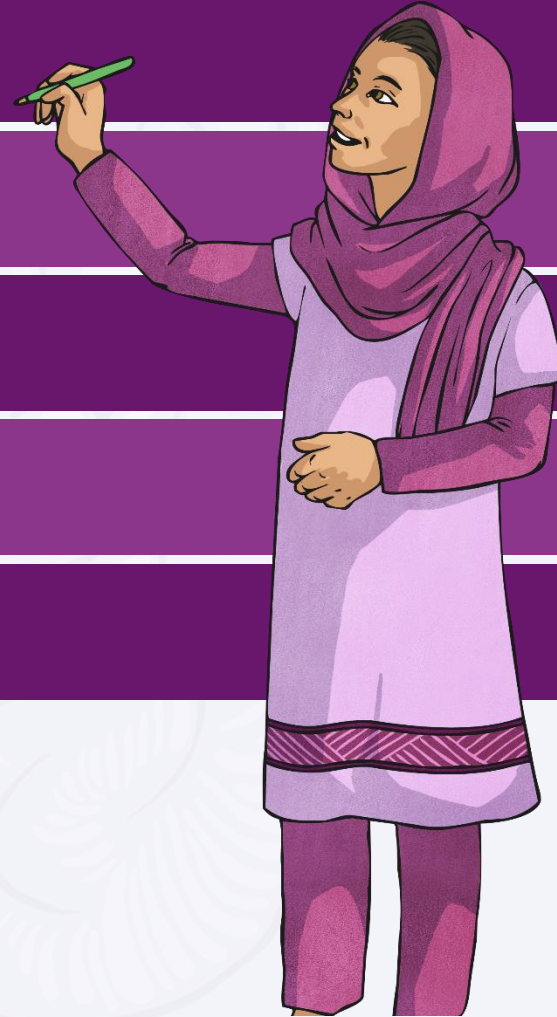
$$134 + 216 =$$

$$1400 \div 4 =$$

$$5 \times 70 =$$

$$70\% \text{ of } 500 =$$

$$965 - 715 =$$



Explain 3 different ways of calculating this in your head:

$$234 \times 9 =$$



