

Show Don't Tell Independent Working Cards

How many ways can you think of to show that a character is feeling **sad**?



twinkl.com

Show Don't Tell Independent Working Cards

How many ways can you think of to show that a character is feeling **tired**?



twinkl.com

Show Don't Tell Independent Working Cards

How many ways can you think of to show that a character is feeling **shocked**?



twinkl.com

Show Don't Tell Independent Working Cards

How many ways can you think of to show that a character is feeling **cold**?



twinkl.com

Show Don't Tell Independent Working Cards

How many ways can you think of to show that a character is feeling **nervous**?



twinkl.com

Show Don't Tell Independent Working Cards

How many ways can you think of to show that a character is feeling **happy**?



twinkl.com

Show Don't Tell Independent Working Cards

How many ways can you think of to show that a character is feeling **excited**?



twinkl.com

Show Don't Tell Independent Working Cards

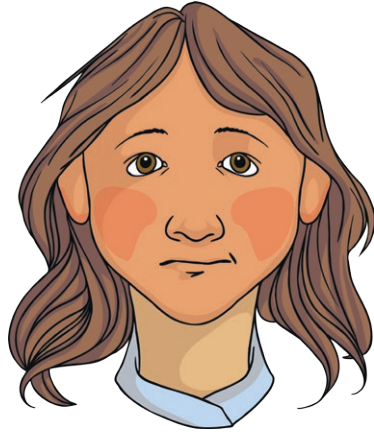
How many ways can you think of to show that a character is feeling **angry**?



twinkl.com

Show Don't Tell Independent Working Cards

How many ways can you think of to show that a character is feeling **embarrassed**?



twinkl.com

Show Don't Tell Independent Working Cards

How many ways can you think of to show that a character is feeling **hot**?



twinkl.com

Show Don't Tell Independent Working Cards

How many ways can you think of to show that a character is feeling **shy**?



twinkl.com

Show Don't Tell Independent Working Cards

How many ways can you think of to show that a character is feeling **afraid**?



twinkl.com