

Diving into Mastery

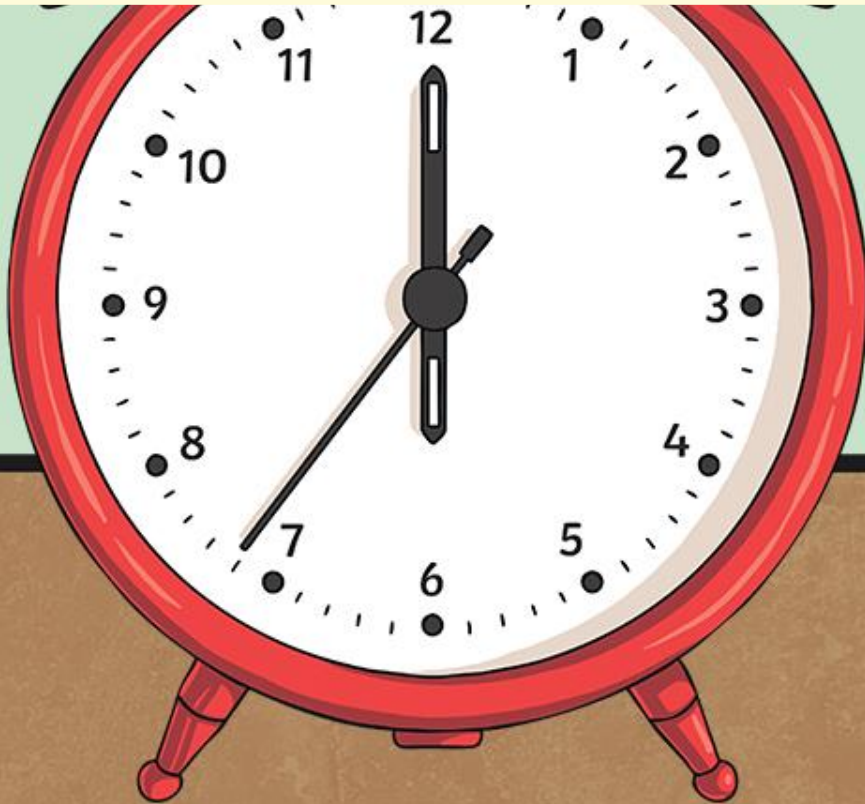


Telling the Time to 5 Minutes



Aim

- Tell and write the time from an analogue clock, including using Roman numerals from I to XII, and 12-hour and 24-hour clocks.





Which of the times match the time shown on the analogue clock?



10 minutes to 4

5 minutes past 10

10 minutes to 1



Which of the times match the time shown on the analogue clock?



25 minutes to 2

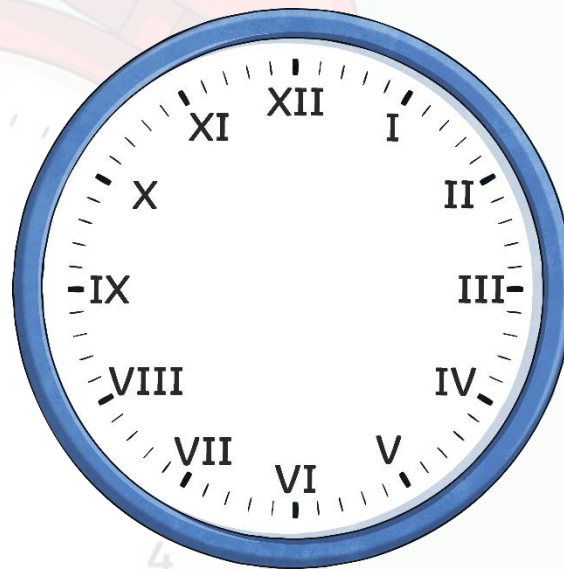
25 minutes to 3

quarter past 7



This clock should show quarter past 7

What Roman numeral should the minute hand be pointing to?



I

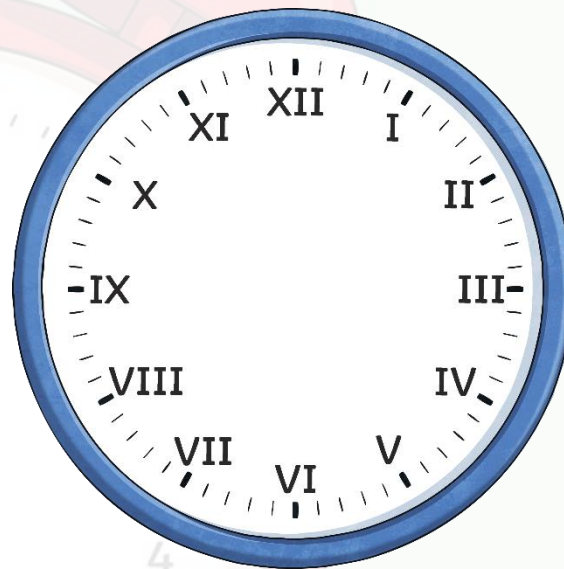
II

III



This clock should show 6 o'clock.

What Roman numeral should the hour hand be pointing to?



VII

VI

V



Year 3 are discussing time shown on the analogue clock.

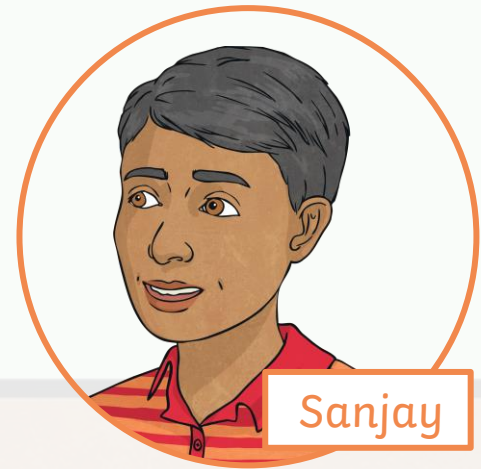
Robert



At half past nine, the hour hand will be half way between eight and nine on the clock face.

I disagree. I think it will be halfway between nine and ten.

Sanjay



Which of the children do you agree with? Explain your answer fully.



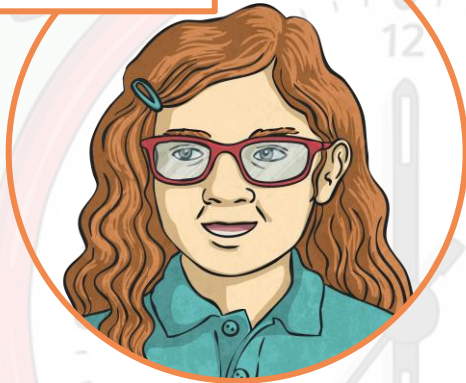
The clock face has lost its minute hand.
What time could it be?
Explain your answer.





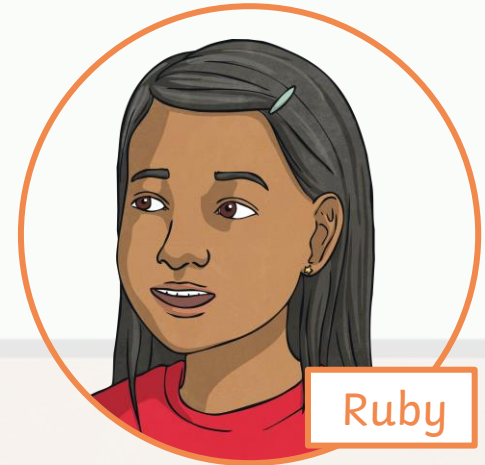
Two friends draw 25 minutes past 4 on an analogue clock that uses Roman numerals.

Michelle



The minute hand will be on V.

The minute hand will be on VII.



Ruby

Which of the children do you agree with? Explain your answer fully.