

How could we find this on a map?

**Royal
Geographical
Society**
with IBG

Advancing geography
and geographical learning



© Wikipedia Commons

How is this landscape shown on the OS map?

**Royal
Geographical
Society**

with IBG

Advancing geography
and geographical learning

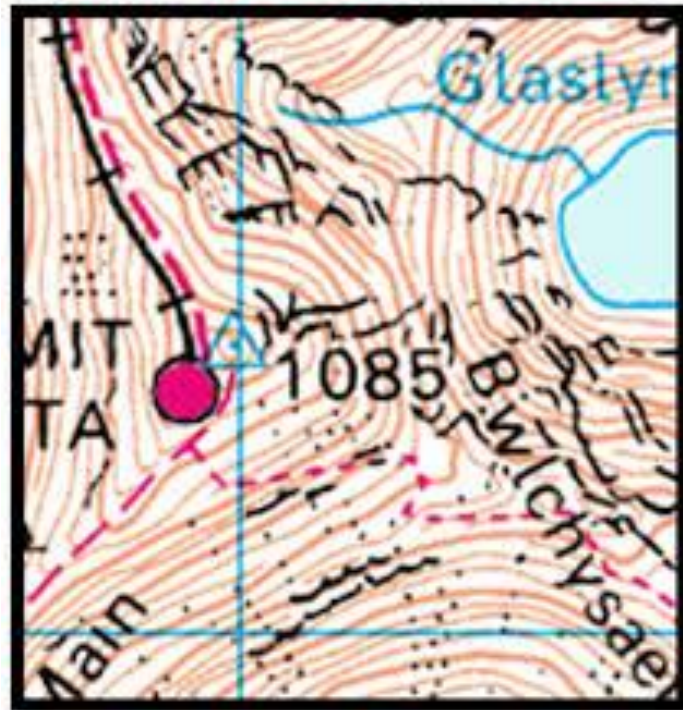


© Wikipedia Commons

How it would appear on an OS map

**Royal
Geographical
Society**
with IBG

Advancing geography
and geographical learning



Triangulation Pillars



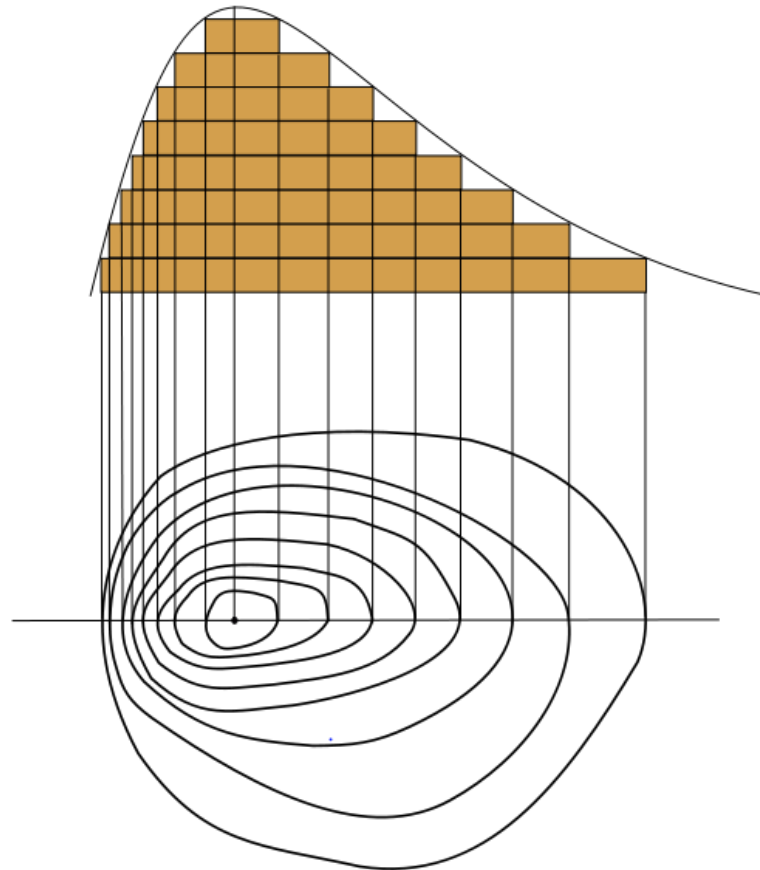
© Peter Robinson

- Triangulation pillars (or trig points) were surveying points formerly used for measuring the exact location of:
 - Land boundaries, railways, roads, and other infrastructure.
- Despite not being in use anymore, many trig points are useful for hikers as navigation points.

Contour lines and gradient

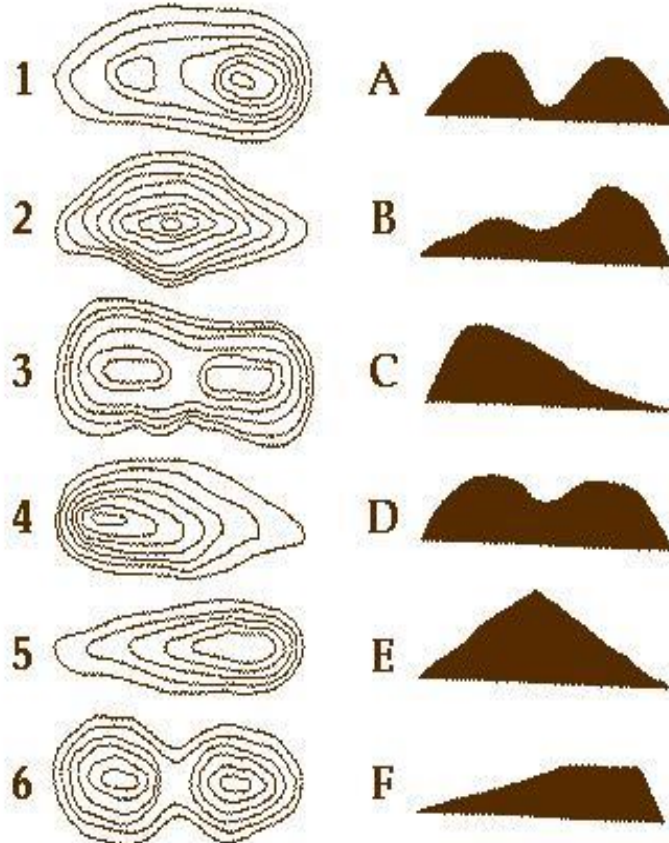
**Royal
Geographical
Society**
with IBG

Advancing geography
and geographical learning



Contour lines

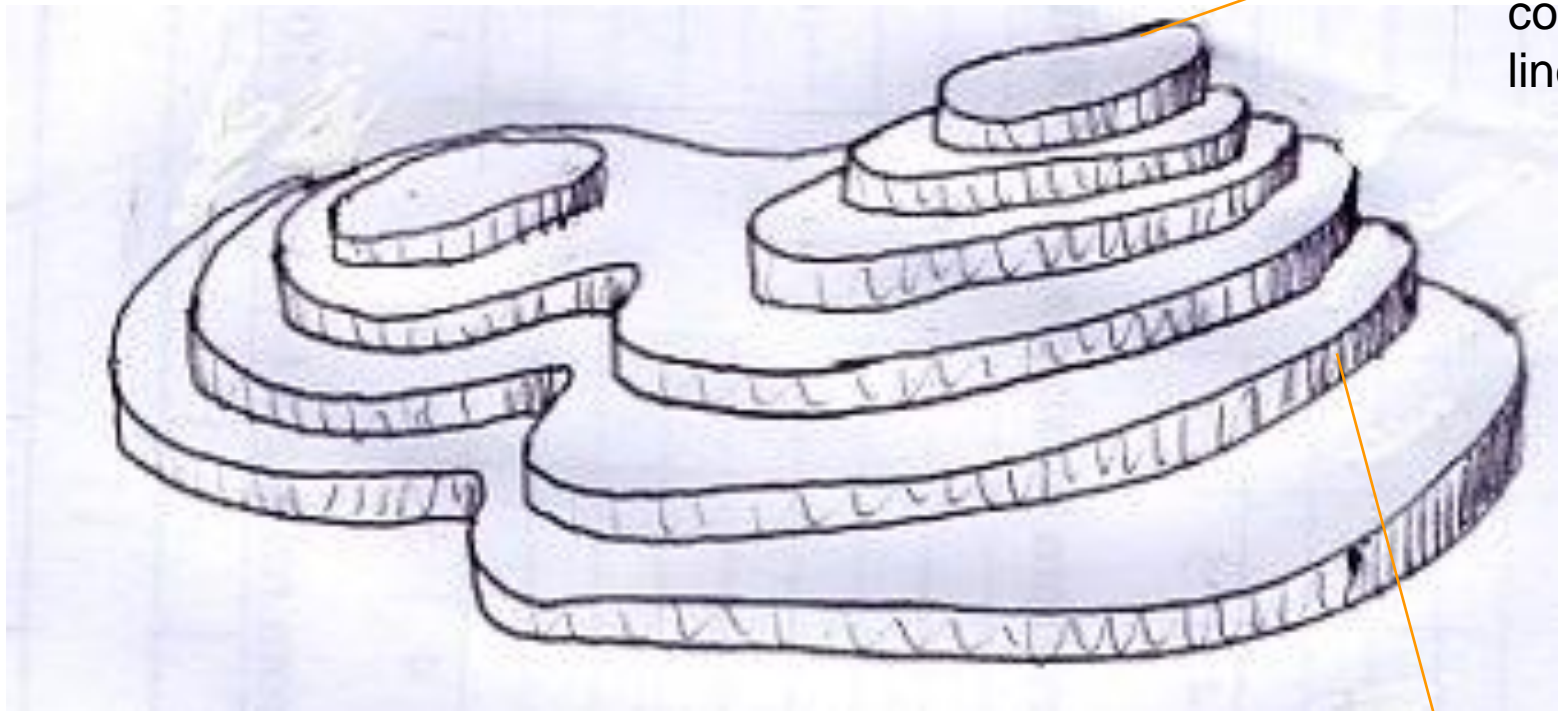
Can you match the contour lines with the landform?



How to make a contour model

**Royal
Geographical
Society**
with IBG

Advancing geography
and geographical learning



Trace the
contour
line

Stick thick card in between
each contour line layer