



Adding -er

Training Camp



Let's practise Sam's Sounds and Common Exception Words!



with



Today, we are learning to spell words that end in **-er**.

When we add -er to the end of an adjective, it means 'more', e.g. loud, louder.



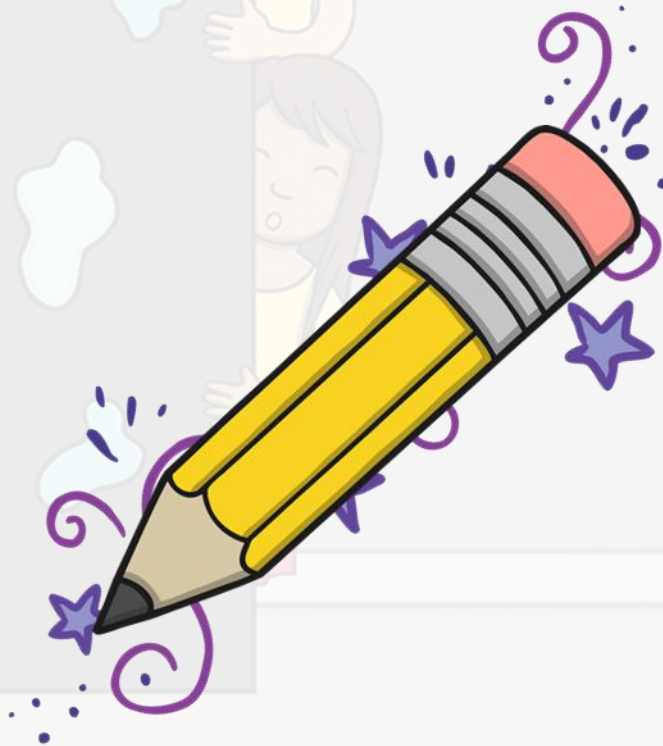
Click me for Kit's teaching tips!

Let's practise reading some of this week's focus words that end in **-er**.

louder
fresher
quicker
colder



Now, let's write them with the magic pencil...



louder



Play



Teach

freshener

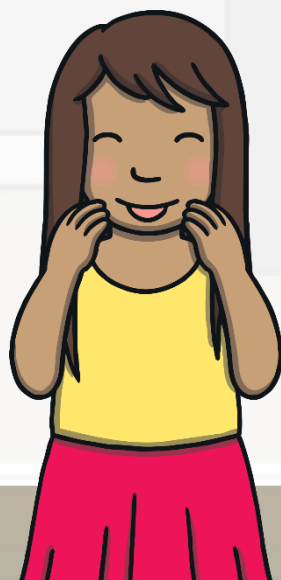


Play



Teach

quicker



Play



Teach

colder

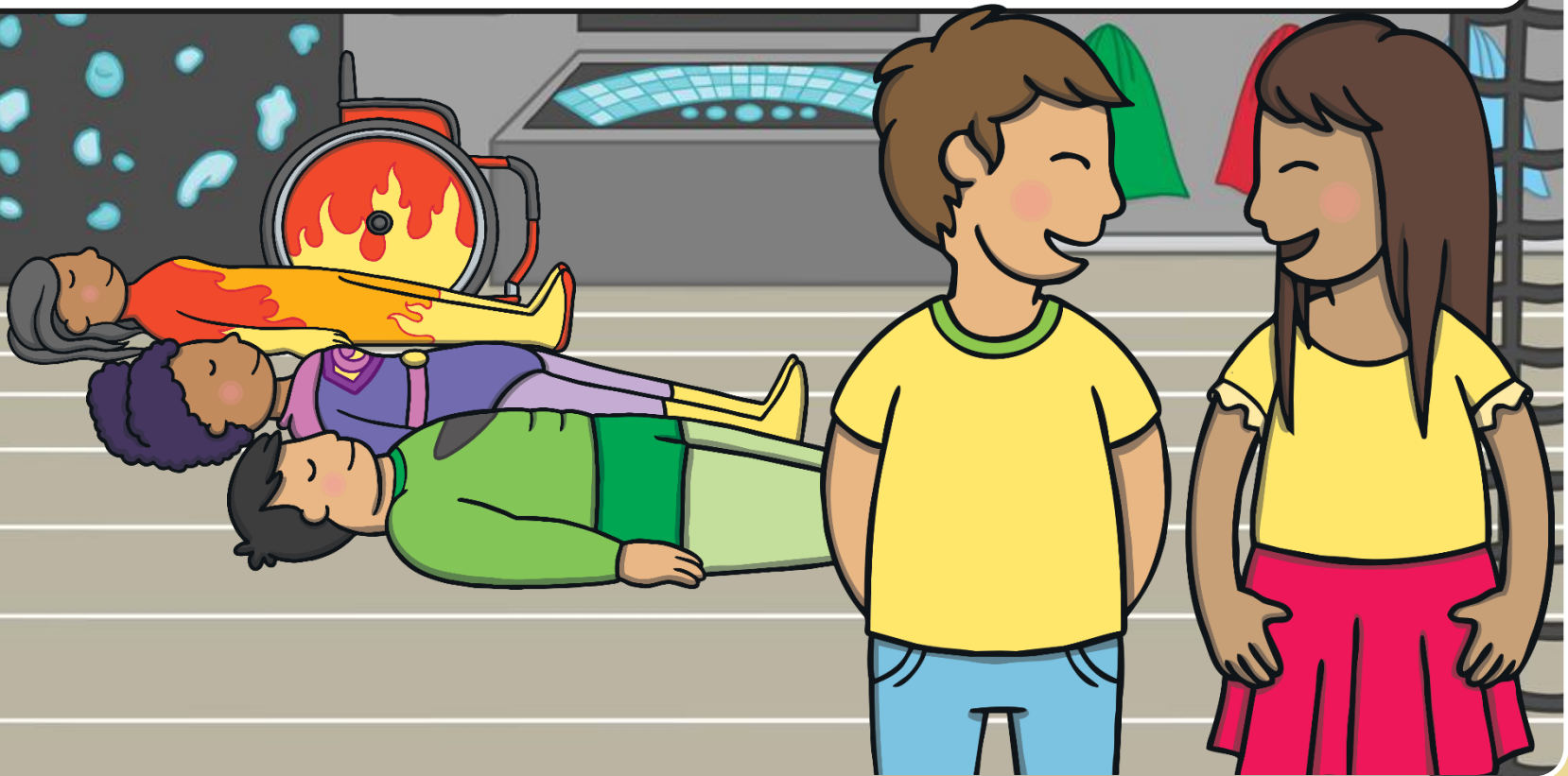


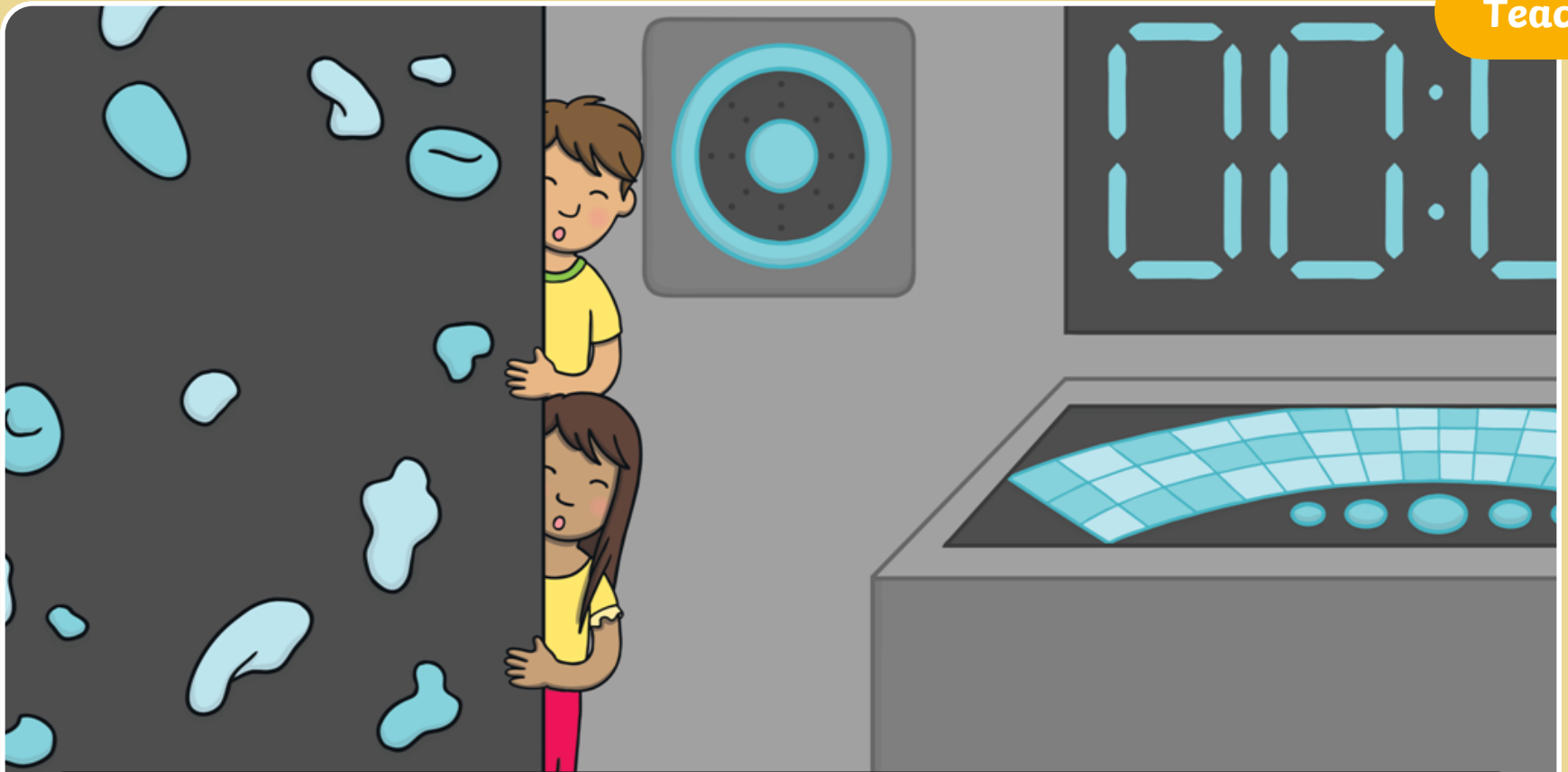
Play



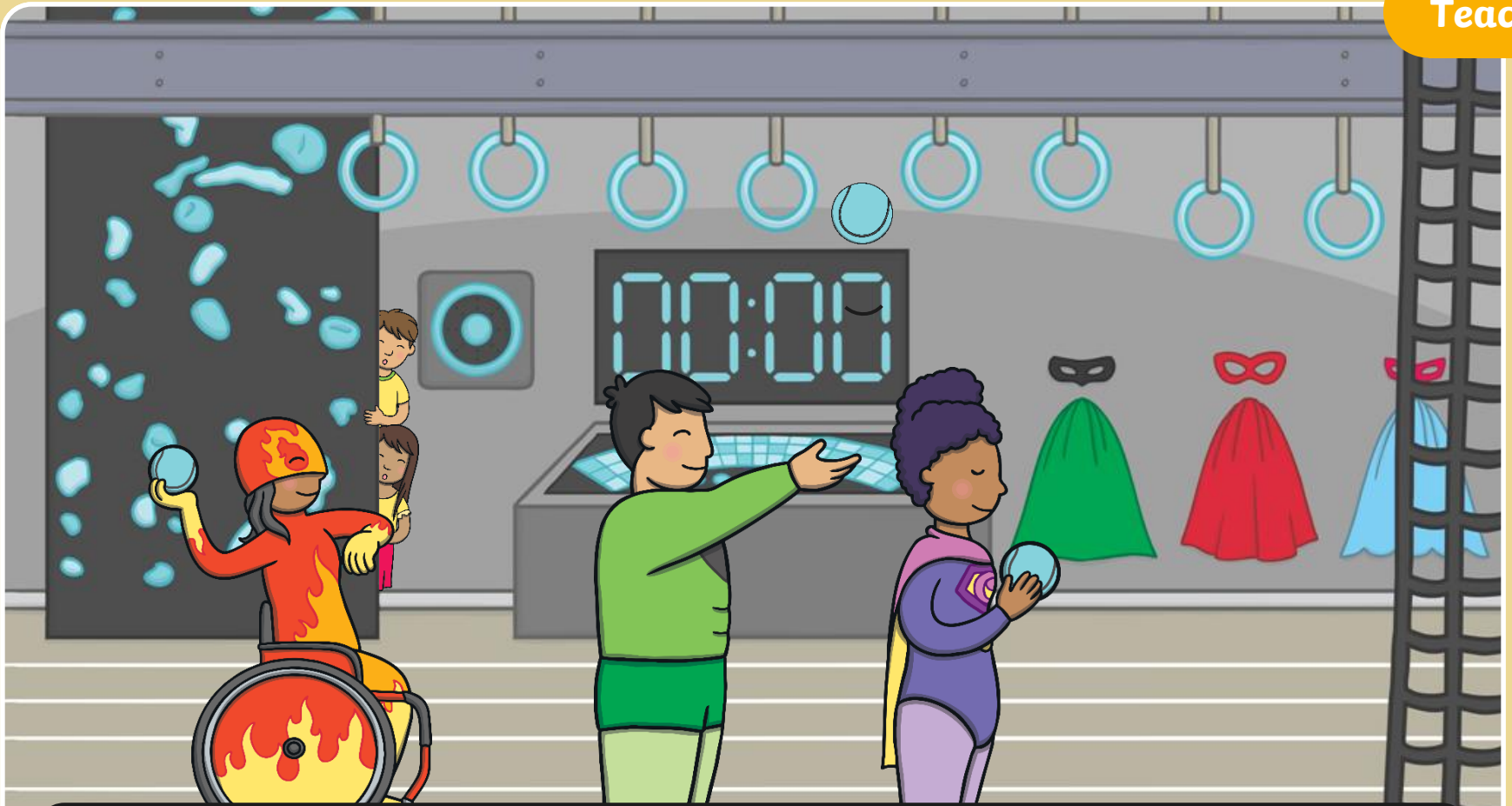
Kit and Sam were stood in a giant hall where the training camp was being held. The next lesson was about to begin. Kit and Sam had no idea what was going to happen.

“Quick, Kit!” said Sam. “We need to hide. Let’s go behind that wall.”





Kit and Sam were speechless watching the superheroes. The superheroes were all lined up in a row, throwing balls. The balls looked a bit like tennis balls but Kit and Sam could not be sure. The voice from the speaker called out commands. “The harder you focus, the more power you will generate.”



“Wow! Look at that!” screached Kit in astonishment.

“Shh!” whispered Sam.

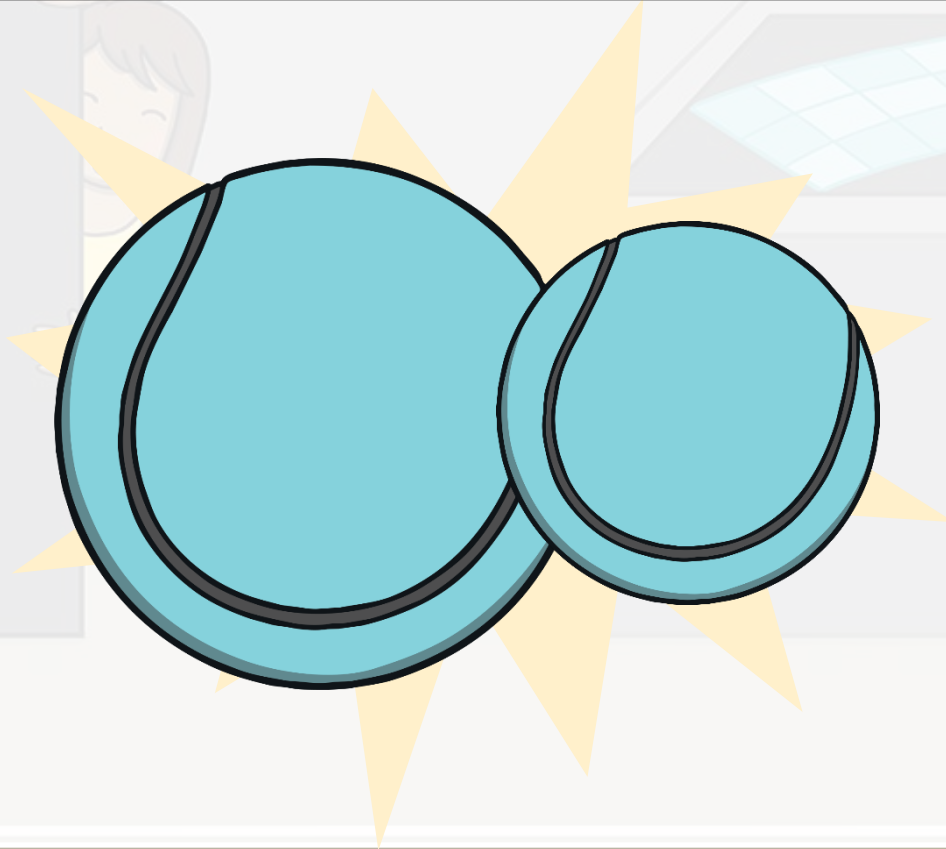
Some of the superheroes were staring at their ball, completely focused on it.



The superheroes seemed to be making their ball travel in different ways. When they raised their arm, the ball travelled higher. When they lowered their arm, the ball moved lower.

-er Tennis Words

Can you unscramble the letters on the balls to spell the words?



Teach

o c c o d e r l

Check



Teach

oulder d

Check



Teach

er c l e a n

Check



Teach

p e e r d

Check



Teach

ew f er

Check



Teach

igh

er

h

Check



Speaker Spellings

The speaker is calling out some **-er** words. Write down the words you hear. Click the speaker four times and then click 'Check' to see if you have the correct answers!





louder

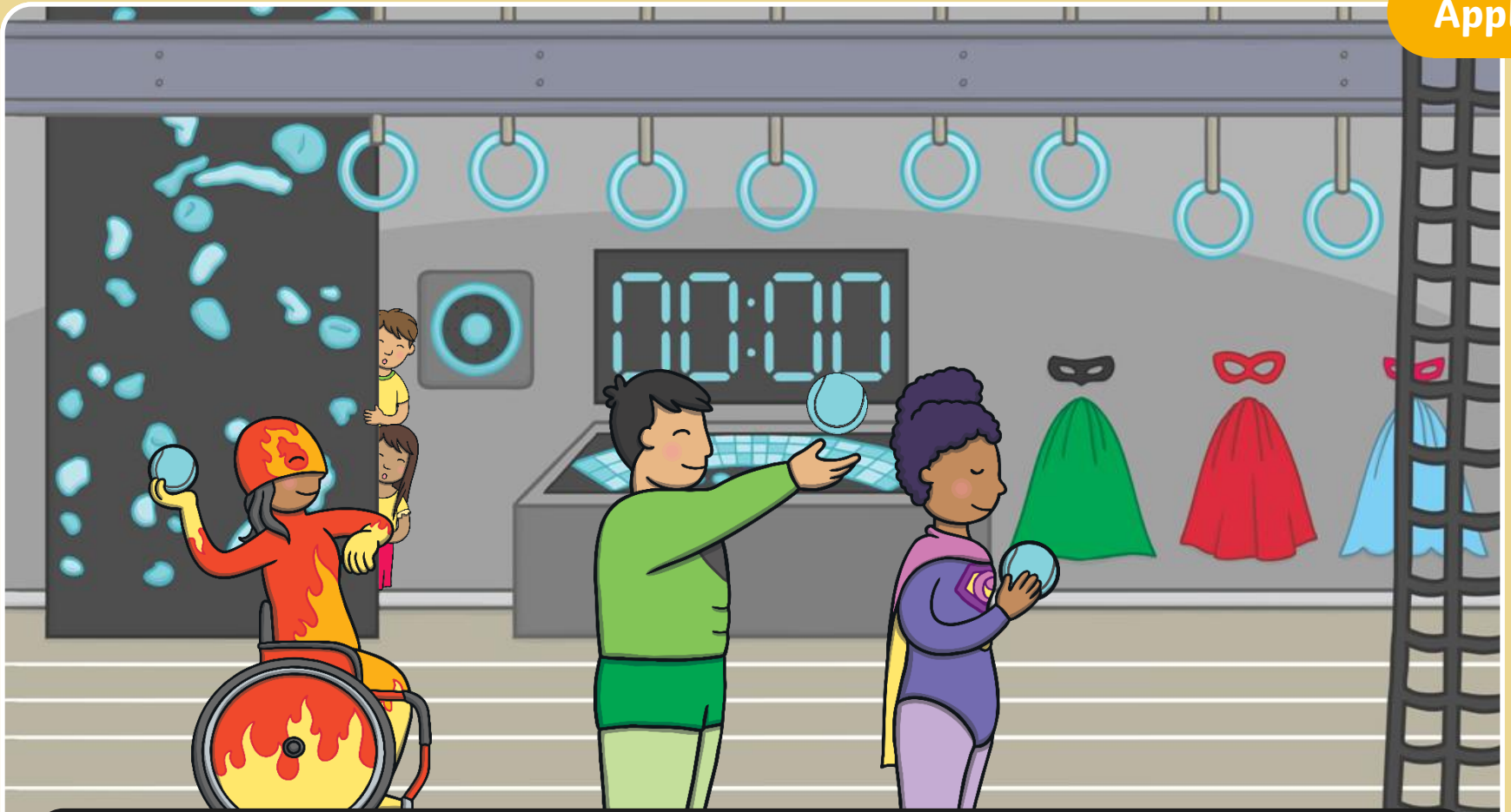
quicker

colder

stronger

Show






"Look at that ball! It is so high up," exclaimed Kit quietly to Sam, "it has hit the beam!"

"Wow! Now it is travelling back at top speed to its superhero," added Sam.

Sentence Time

The speaker calls out something as balls are zooming through the air. What does the speaker say? Write a sentence to match the picture.



Click 'Show Suggestion' to see a suggested sentence for the picture.



Click me for Kit's teaching tips!

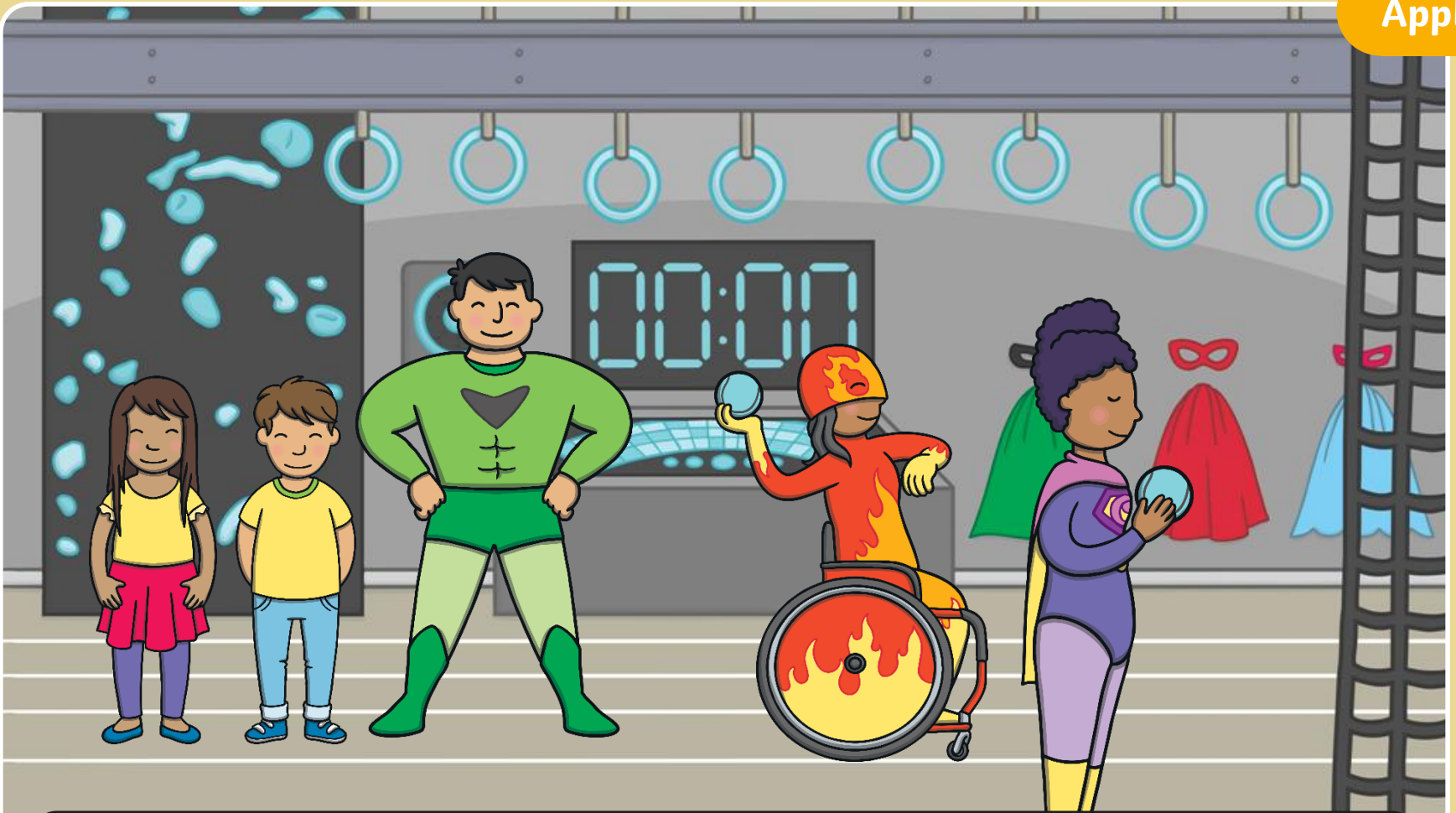
A quicker, faster ball means
your powers are increasing.



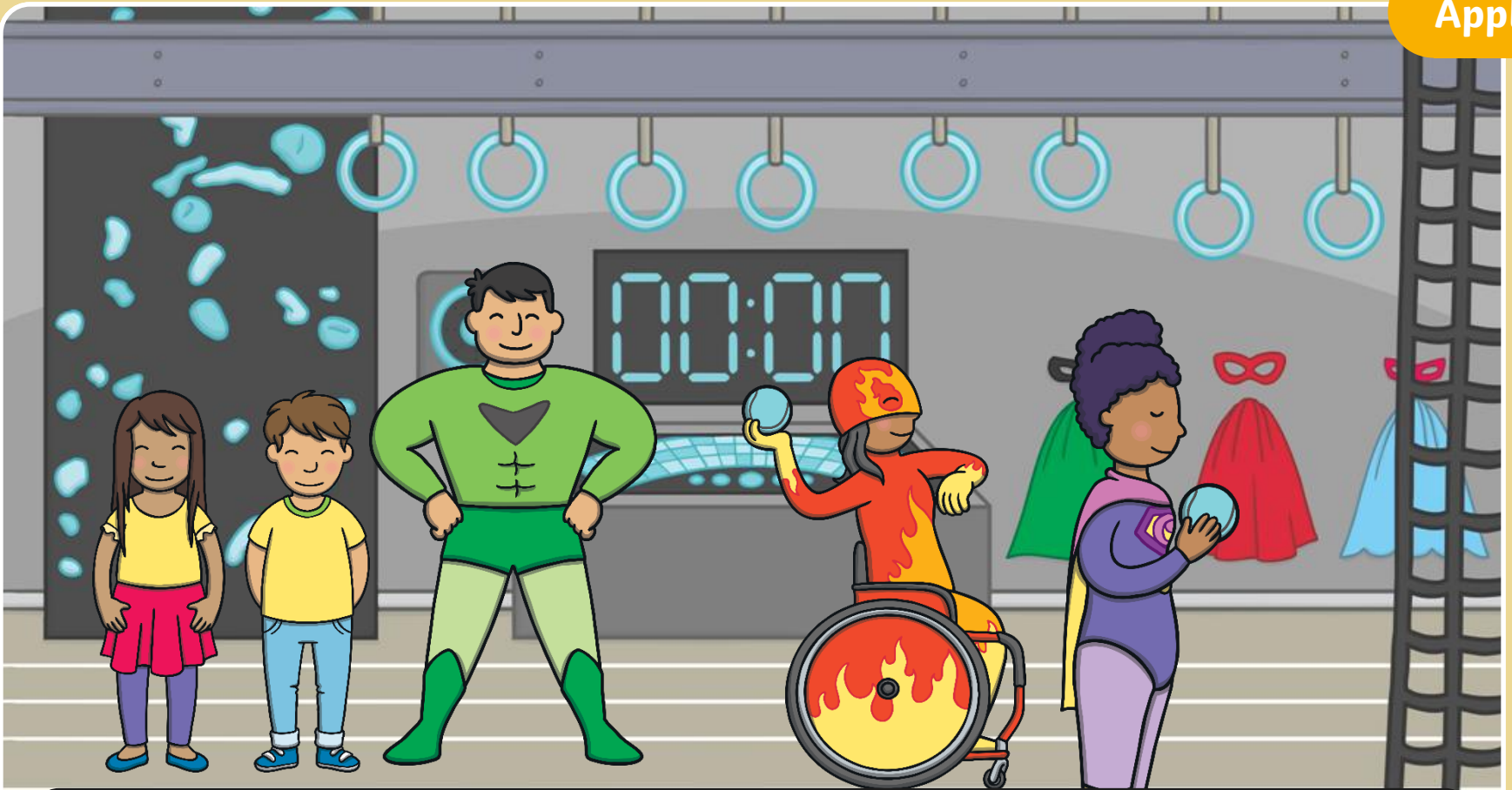
Sound Buttons On/Off

Show





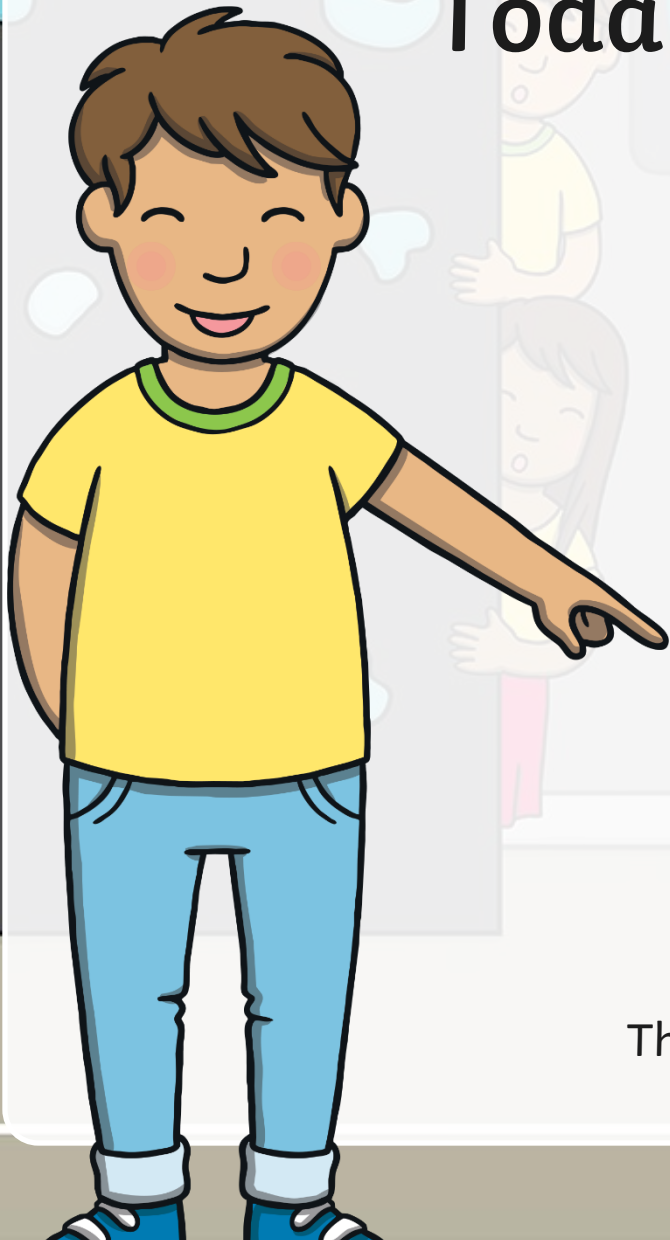
Much to Kit and Sam's surprise, one of the superheroes had seen them. "You two need to be quicker if you want to join in. It is nearly time for the next lesson. Quick, grab a mask and a cape."



Kit and Sam were a bit hesitant to join in. However, they fancied having a go. Once they had masks and capes on, they looked the part. Would they be able to make their balls travel higher than the superheroes did, using their magic powers?

Today, we have learnt...

**Adding
-er**



The adventure continues next lesson!

