

Real or Nonsense Mask Words

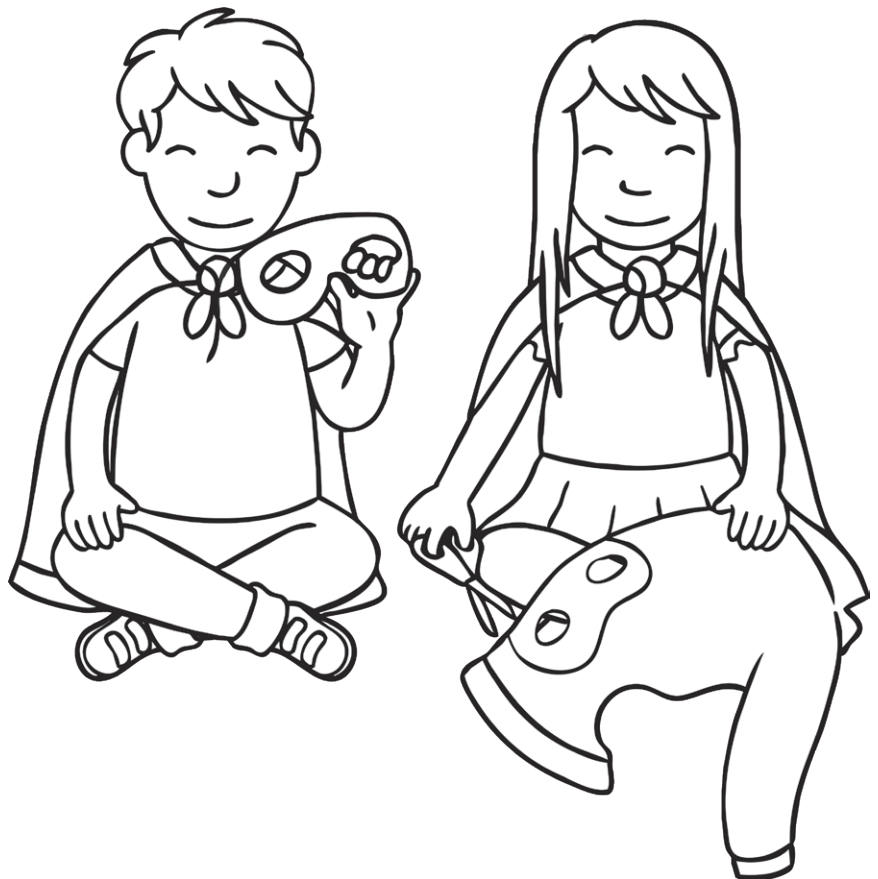


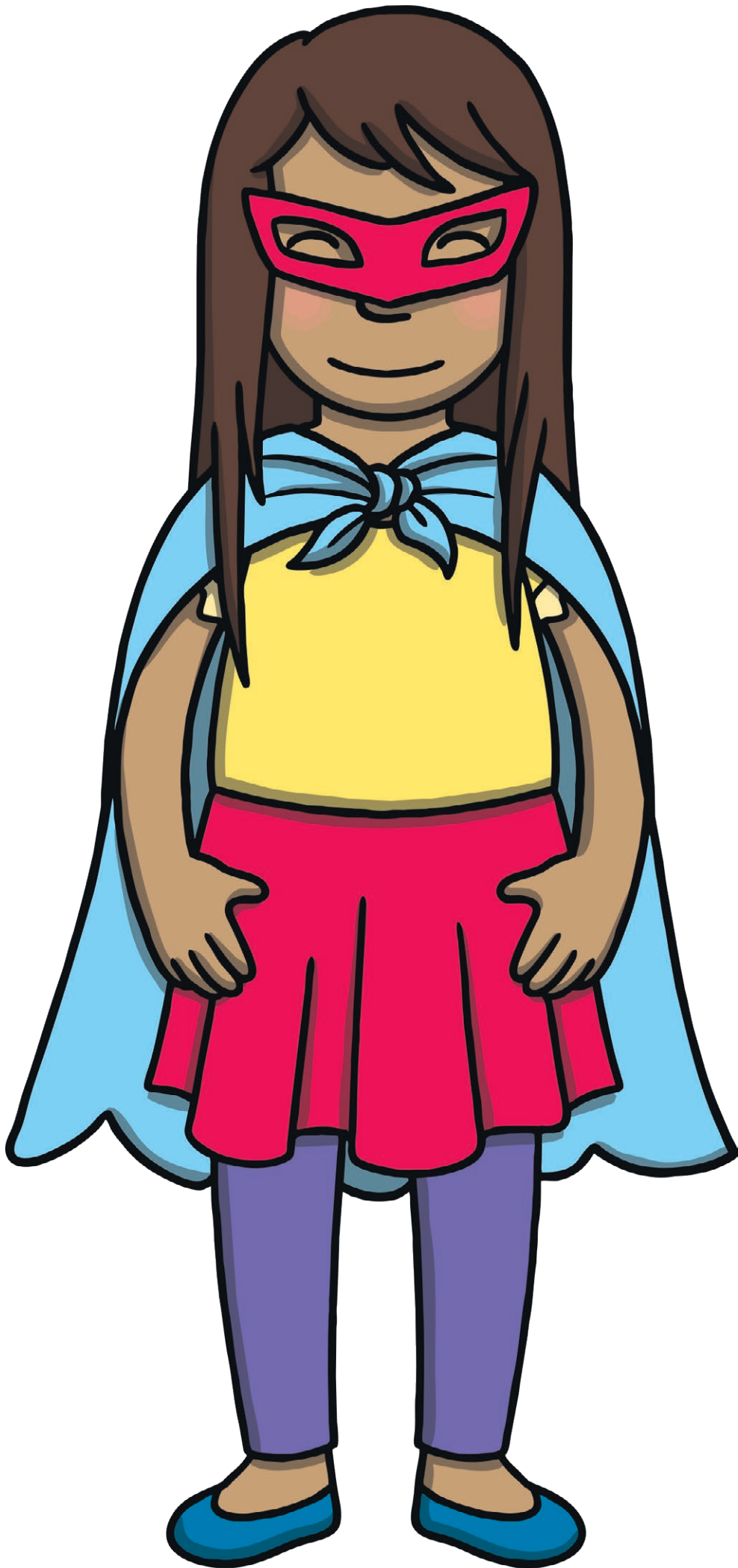
Level 5

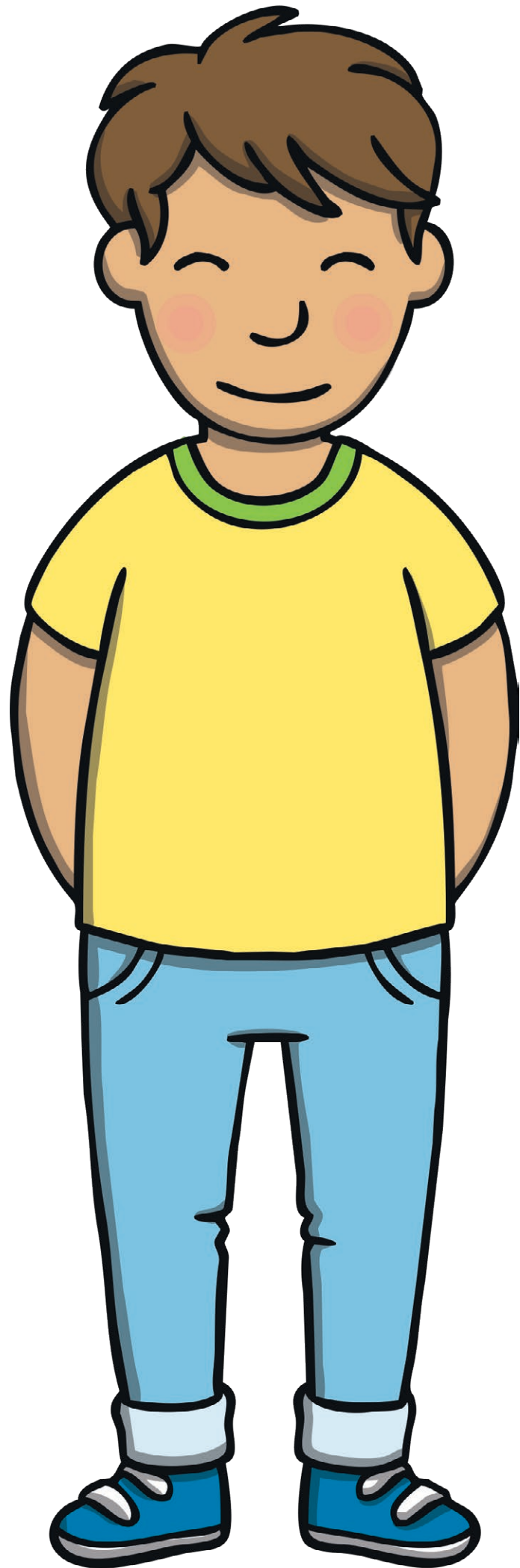
Help Kit and Sam sound out the words and decide if they are real or fake.

Adult Instructions:

- Stick up the two posters in opposite corners of the classroom.
- Give each child a Word Card to read.
- Children to stand beside the correct poster, depending on whether the word is a real word or fake word.







Challenge



Level 5

Can you think of sentences using the real words?

